



New Zealand Friendship Force National Gathering 18 - 21 March 2022

INFORMATION SHEET

Venue

The venue for our 2022 National Gathering is MiCamp at Waitetoko, Lake Taupo. For information about the campsite go to <https://www.micamp.co.nz/lake-taupo.html>.

Most sessions and activities will be in the main auditorium, which is part of the accommodation complex. The Delegates meeting will be held in the dining room.

Covid-19 Restrictions

MiCamp requires all guests to be fully vaccinated.

Accommodation

All accommodation for the gathering has been arranged at MiCamp. We have reserved Lodges A-E, Units 1-5, and the self-contained flat (see attached map). All accommodation is twin bedrooms and shared bathrooms. Rooms will not be serviced. Each unit has a shared common space and a kitchenette with fridge and microwave.

The accommodation fee covers from Friday midday to Monday morning. The charge of \$260 includes all meals. All linen, including towels, is provided by MiCamp.

Powered caravan/campervan sites are also available and can be booked through the registration form. The charge of \$190 per person also includes all meals.

Registration

The registration desk will be open in the Auditorium from 12.00 noon on Friday 18th. Please go to the registration desk immediately on arrival to collect your programme and accommodation details.

Please note that lunch will **not** be provided on Friday, so bring your own or eat before you arrive.

Day registration is available at \$100 for the full programme, or single day registrations on request.

Catering

The registration fee covers dinner on Friday, breakfast, lunch and dinner on Saturday, breakfast, lunch and dinner on Sunday, and breakfast on Monday.

All meals are served in the Dining Hall.

We would like to provide morning/afternoon tea for the business sessions and supper at the final party. To do this we ask that if you can, **please bring a plate of finger food** to share during the three days – slices, biscuits etc. This will help to keep costs to a minimum for everyone.

Transport

Arrival by own vehicle:

Directions: Turn off SH1 at Waitetoko into Rawhira Road, and drive to the end of the road which is the MiCamp entrance.

Transport from Taupo:

Taupo club members are happy to help ferry members from Taupo to MiCamp on the Friday and in reverse on Monday. If you require transport to and from the camp please indicate that on the registration form. If you don't have your pick-up details at this stage just put TBA in the relevant spaces. A small charge of \$10 pp to the driver will help defray petrol costs.

Proposed Programme

A brief outline of the programme is attached to this information sheet. A detailed programme will be available as a separate document closer to the gathering.

Sunday activities

You have two options for the Sunday afternoon session – or you can just relax at the venue if you prefer.

Option 1 – Bus tour A bus tour around the southern end of the lake including a visit to the Tongariro Trout Hatchery, an old Maori Pa, the Tokaanu Thermal area, the swing bridge, and other places of interest. Cost will be in \$35-40 range and trip will take place and payment requested only if there is enough interest.

Option 2 – Walk Take a walk along the Tongariro River (with Taupo member as a guide) – no cost.

Musical Mayhem II

Our 2021 National Gathering finished with a bang, with our 'Musical Mayhem' evening featuring the Wellington Friendship Force band. We all loved it so much we have asked them to come back again to entertain us with another singalong and dance/rock 'n roll segment to get us up on our feet.

And again we invite members or clubs to put together an item or a party piece – you could play us a tune, sing us a song, perform a skit, read a poem, or anything else that you think will entertain us all! Purely optional, but we'd love you to contribute. Get those creative juices flowing and have some fun!

Key Contacts

Organisers: Debbie Lattey, 04 293 3252, 021 689 348, debbie@otaihanga.co.nz
Colin Ridge, 07 378 5088, colinjanet123@gmail.com
Alan Milne, 07 378 8088, alanmilne40@gmail.com

Registration: Colin Ridge, 07 378 5088, colinjanet123@gmail.com

Booking Conditions & Refunds

Early Bird Registrations will go in the draw to win one of three \$50 vouchers. The closing date for early bird registrations is 31 January 2022. Registrations received after that date will only be accepted if space is available. No registrations will be accepted after 28 February. If the event is cancelled due to Covid-19 then full refunds will be made.

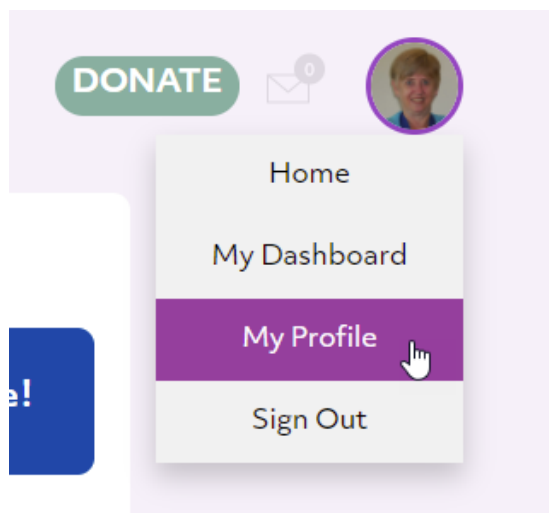
To be eligible for the Early Bird draw you need to include your FFI membership number on your registration form. Information on how to find your number is below.

How do I find my FFI membership number?

My.friendshipforce.org is a new member portal that connects you directly to FFI, allocates you a member number, and will keep a record of all your journeys and membership information as we go forward. You can also easily access FFI's annual reports, all the Virtual Experiences that have been created, and more, all in one easily accessible space. You can even print out your own membership card!

Just go to my.friendshipforce.org and enter your email address, create a password, and select the club you are a member of. Your President will be sent an email to confirm you are a member, and you can enter any other personal information you wish to (and even your photo) on your secure part of the website. No-one else will have access to your personal information, and you can even print out a membership card with your details on it!

Once you are logged in you will be able to access your information by clicking on your photo (or the photo placeholder) on the right side of the screen and then select My Profile – see below. You will need to have a member number before you will be able to join any future domestic or international journeys, or register for FFNZ national gatherings, so get registered now!

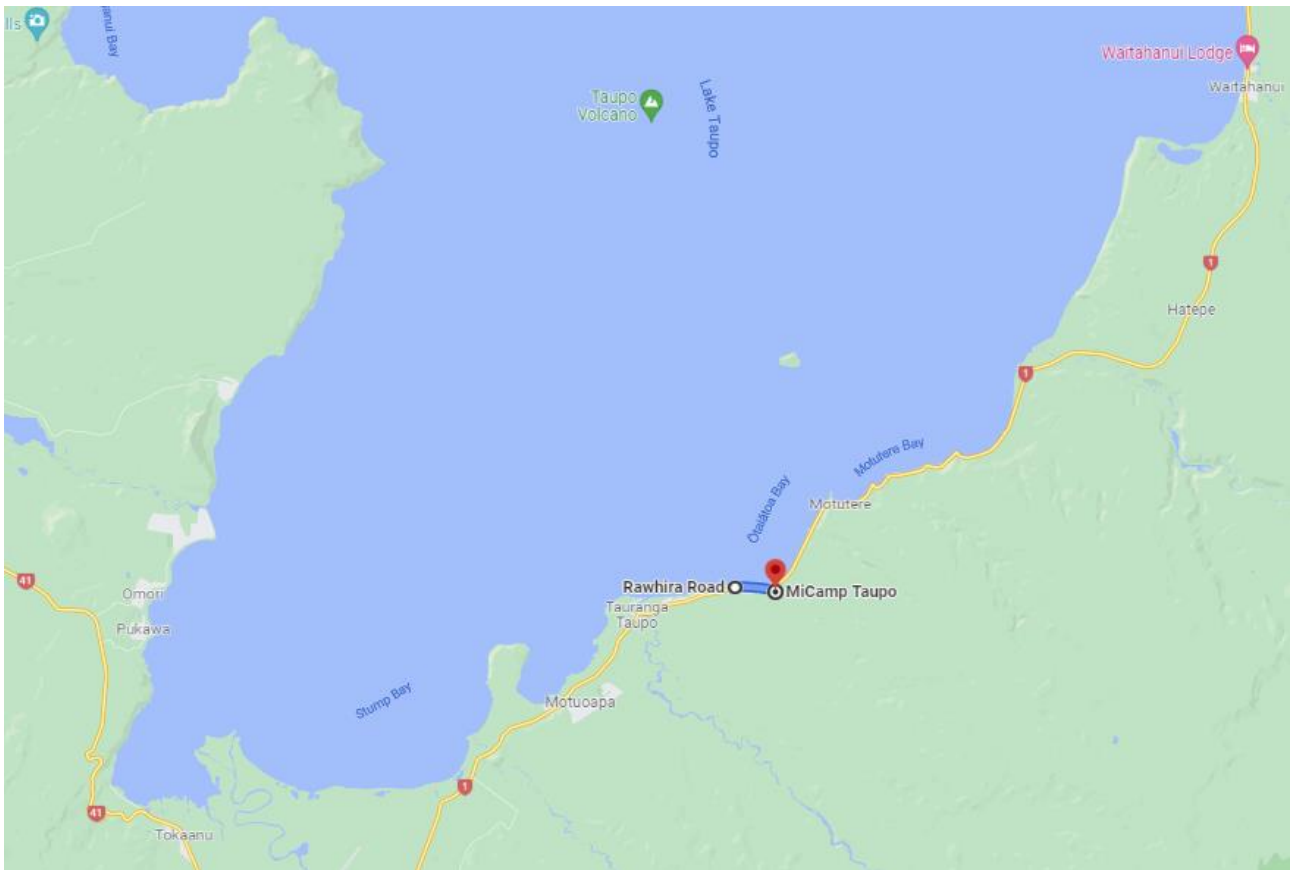


MiCamp at Waitetoko, Taupo - 18-21st March 2022

Programme for Gathering

Friday 18th	12.00 noon	Registrations open in Auditorium
	12.00	Field Reps Meeting (venue to be arranged)
	3.00	Delegates Meeting in Dining Hall
	6.00	Dinner in Dining Hall
	7.30	Opening Session in Auditorium
Saturday 19th	8.00am	Breakfast in Dining Hall
	9.00	Late Registrations in Auditorium
	9.30	Business session in Auditorium
	1.00pm	Lunch in Dining Hall
	2.00	Activities – outdoor
	6.00	Dinner in Dining Hall
	7.00	Activities in Auditorium.
Sunday 20th	8.00am	Breakfast in Dining Hall
	9.30	Business session in Auditorium
	1.00pm	Lunch in Dining Hall
	2.00	Activities – bus tour, walk along river or own plans.
	5.00	Happy hour in Auditorium
	6.00	Dinner in Dining Hall
	7.00	Musical Mayhem II in Auditorium with the Wellington FF Band.
Monday 21st	8.00am	Breakfast in Dining Hall
	10.00	Checkout to be completed.

MiCamp, 100 Rawhira Road, Waitetoko, Lake Taupo



MiCamp Taupo Site Plan

